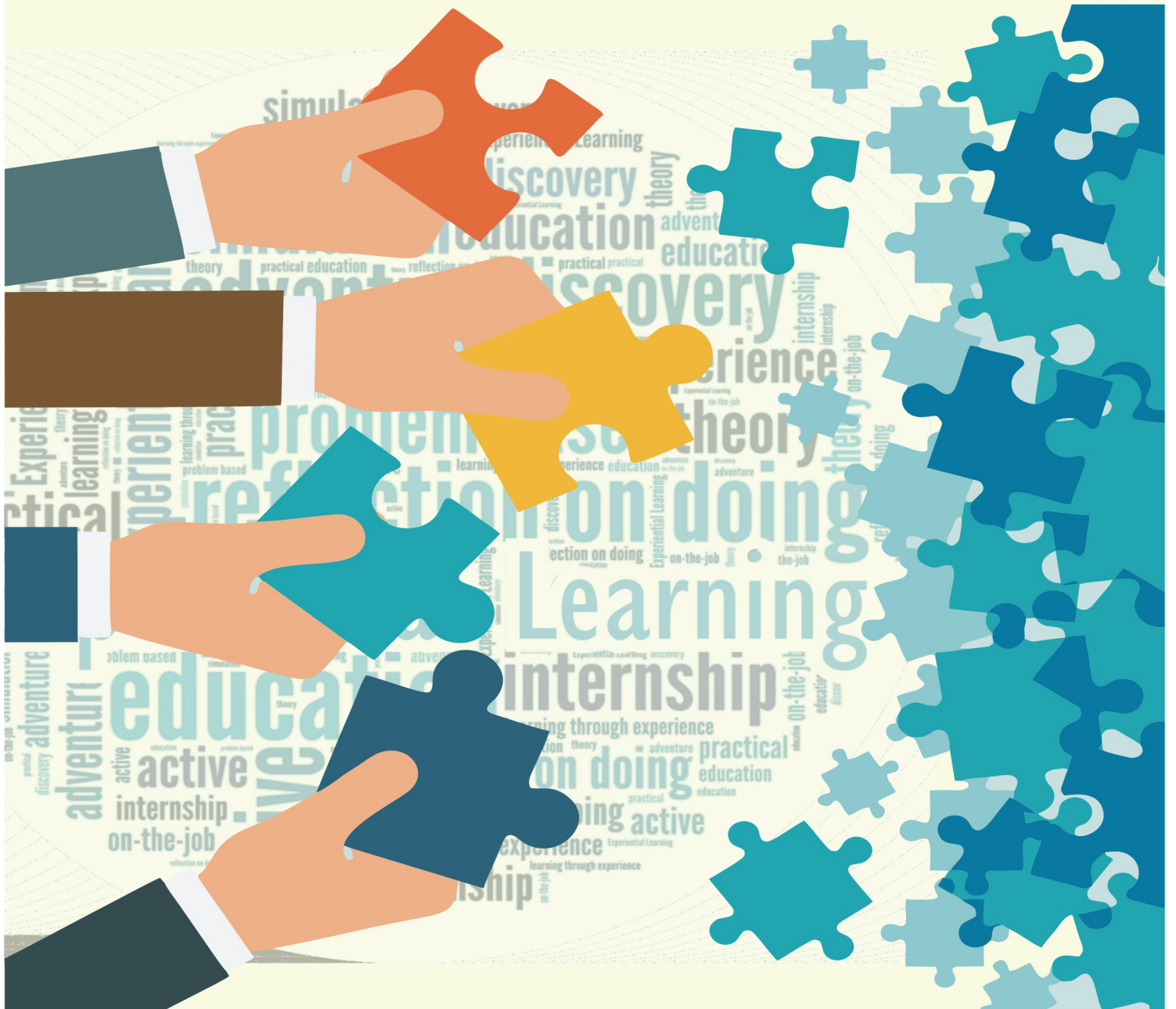


PISA 2021

CCT Assignments
Class IX-X



CLASS IX READING LITERACY

PART A

Musical Instruments to Play

A musical instrument is a device created to make musical sounds. Anything that makes a sound can be used as a musical instrument. The history of musical instruments goes back to the beginning of culture. People first used instruments as ritual: a hunter might use a trumpet to signal a successful hunt; a drum might be used in a religious ceremony.



Cultures later composed and performed a set of sounds called a melody for entertainment. Musical instruments were needed. Some historians report that the earliest musical instrument was a simple flute. Many of the earliest musical instruments were made from animal skins, bone, wood, and other non-durable materials. Musical instruments were developed separately in the different countries and regions of the world, but when civilizations shared information amongst themselves, the development of instruments spread. For example, cultures of North America, South America, and Central America used similar instruments and shared these ideas of making instruments that were alike in some way.

Many different ways have been used to classify instruments over the years. One way to classify instruments is to put them in groups by the range of music the instruments can play. Another classification is to put them together by what they are made out of. However, the most common method of grouping instruments is by how they produce sounds. The academic study of musical instruments is called organology. Woodwinds and brass (sometimes called the “wind” instruments), string, percussion, electric, and keyboard are types of instruments grouped according to how they are made and the range of music and sounds they play.

Woodwind and brass instruments include the trumpet, clarinet, flute, oboe, trombone, tuba, and harmonica. Stringed instruments include the banjo, guitar, harp, violin, and viola. Percussion instruments include the cymbal, chime, timpani, drum, and tambourine. Electronic instruments are the keyboard and the synthesizer. Keyboard instruments include the accordion, organ, and piano. Maybe you will play an instrument someday. Will it be a woodwind or brass, stringed, percussion, electronic or a keyboard instrument?



A. Matching. Draw a line to connect which musical instruments belong to the categories listed in the story.

- 1. woodwind and brass a) banjo, guitar, harp
- 2. stringed b) trumpet, clarinet, flute
- 3. percussion c) keyboard, synthesizer
- 4. keyboard d) accordion, organ, piano
- 5. electronic e) cymbal, chime, drum

B. Phonics work.

The word "electronic" in the story ends in the letters "ic" that make a short "i" sound followed by a "k" sound. Write another word that has the "ic" letters to make the "ik" sound (a short i followed by the k sound).

The letter "y" in the word "history" is changed to "i" when adding the suffix "an", which means "of". So a "historian" is someone "of history", an "Italian" is someone "of Italy", etc. Write another word that has the "an" suffix. Write what the word means.

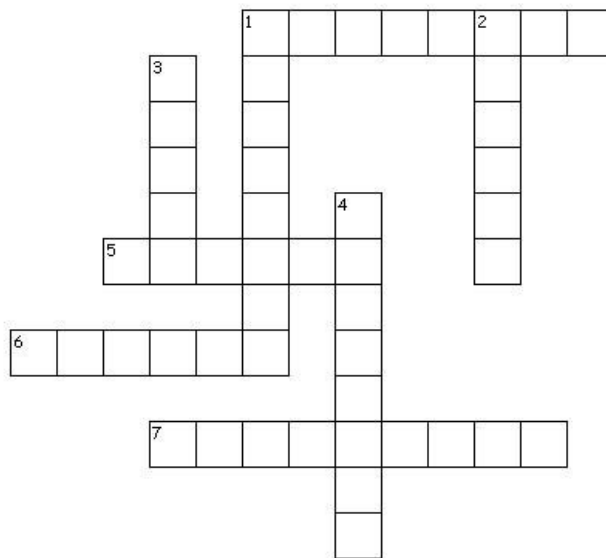
C. Crossword. Use these words to solve the musical clues:

device, signal, ceremony, composed, performed, melody, classify, range

Across

- 1. formed; made up of
- 5. something invented, devised, fitted
- 6. sweet music
- 7. played

- Down**
- 1. to group according to some system
 - 2. a sign giving warning or notice
 - 3. the distance between; extent
 - 4. a special act done on special occasions



D. Multiple-Choice Questions (Circle the correct answer.)

1. The text mentions that musical instruments are made out of all of these materials except _____.

- a. animal skin
- b. bone
- c. rock
- d. wood

2. According to the text, what is the most common way of grouping instruments?

- a. by range of music played
- b. what they are made out of
- c. how they look
- d. how they produce sounds

3. According to the text, what was the earliest reported instrument?

- a. a simple piano
- b. a simple flute
- c. a simple guitar
- d. a simple harp

E. Extended Response (Answer in complete sentences.)

1. How does the text define "musical instrument"?

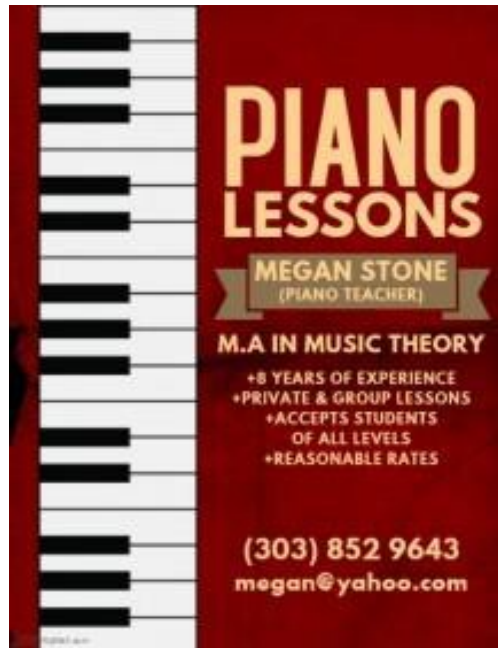
2. Explain at least two ways early instruments were used.

3. What did early cultures of people do to foster and encourage music?

4. Name two instruments which you think were first played in your country.

F. Write the word from para 2 which means the same as 'similar'.

PART B This is an advertisement in the form of a poster.



1. Who do you think has paid for this poster?

.....

2. Why has the teacher got these posters made?

.....
.....

3. What is her contact no.?

.....

4. What makes the teacher special?

a)

b)

5. If you were in her place, what would you do to promote your classes?

.....
.....

6. Name three places in the school where you think this poster should be displayed.

PART C This is the location of a musical instrumental store:



Furtados [234 Google reviews](#)

Musical instrument store in Chandigarh, India

Address: S.C.F. No - 21, Ground Floor Inner Market, Sector 7-C, Chandigarh, 160019

Hours:

Closed · Opens 10:30AM
Tuesday 10:30am–8pm
Wednesday 10:30am–8pm
Thursday 10:30am–8pm
Saturday 10:30am–8pm
Sunday 10:30am–8pm
Monday 10:30am–8pm

Thanks for your feedback.

Phone: 0172 437 1675

Website: <http://www.furtadosonline.com/>

Category: Musical instrument store

[Suggest an edit](#)

Questions & answers

[Ask a question](#)

Q: Can I get musical instruments by credit card?

A: Yes

Based on the visual input and the given information, answer the following questions.

Q.1. Which musical instrument store is being highlighted here?

.....

Q.2. What is the address of this music store?

.....

.....

Q.3. In case of a query, how would you contact the store?

a).....

b)

Q.4. You are in Sector 17 right now and have to buy a guitar urgently. Which store would you go to? Why?

.....
.....
.....
.....

Q.5. When is the store closed for the whole day?
Why do you think it is not closed on the weekend?

.....
.....
.....
.....
.....
.....

PART D

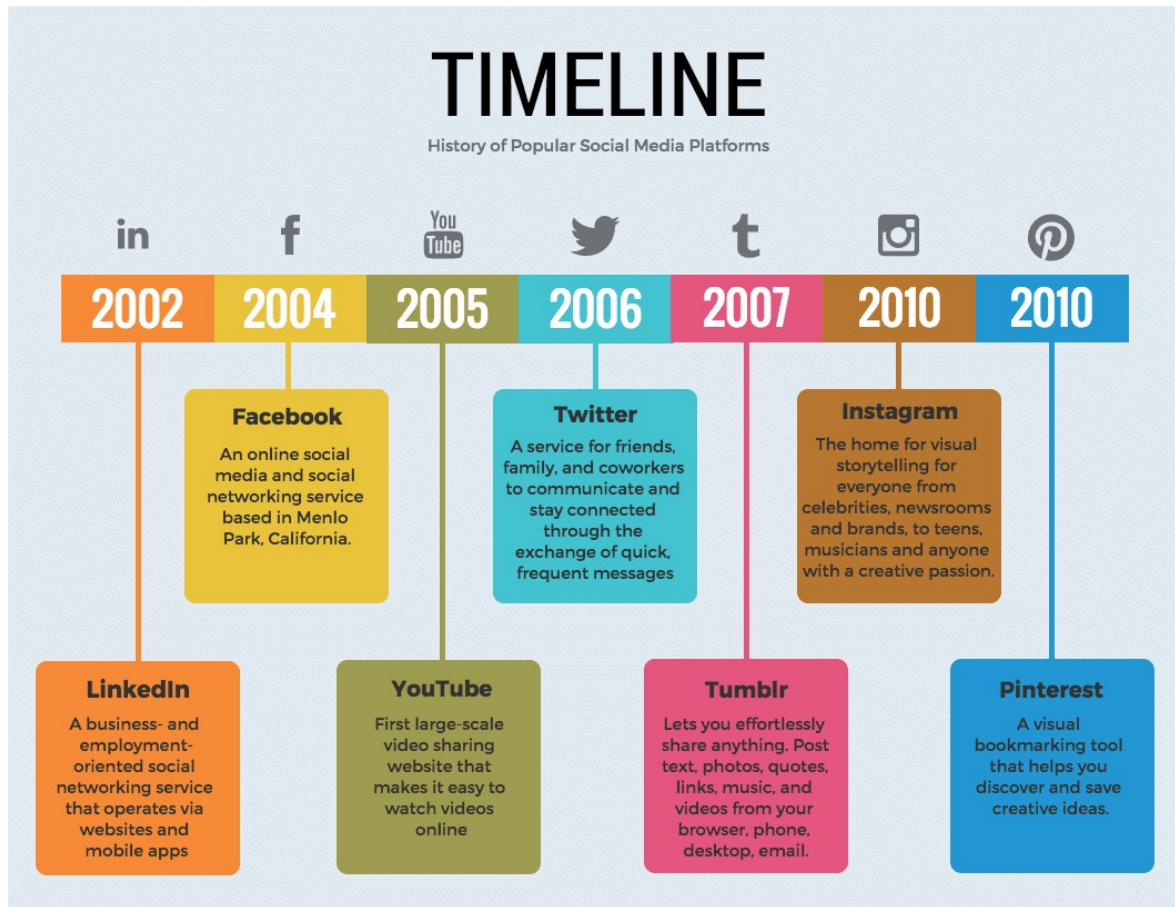
If you could play any instrument, what would it be? Why do you think you would choose that particular instrument?

.....
.....
.....
.....
.....
.....
.....
.....

Module 2

Critical And Creative Thinking
Sub: English Class : X

Here's a timeline sharing important information about various social media platforms. Let's have a look and answer the questions followed.



1. The time line depicts the _____
2. _____ the oldest social media platform whereas _____ and _____ form the most recent ones.
3. _____ is the most famous platform used by politicians, celebs, sportsmen, actors and artists to express their views.

4. The two most important things required to make account on above platforms are _____ and _____

5. Mention any two disadvantages of using these social networking sites.

6. The lens like symbol is an icon of _____ social networking site.

7. The speed of the internet is measured in _____.

8. The followers of a celebrity are increasing at the rate of 25% per week. The present no. of followers are 45000. What will be the total no. of followers after three weeks?

9. In order to verify that you are not a robot, many websites provide a _____
(Captcha/ Finger Print Scanning/Color/Retina Scanning) code to fill in.

10. Mention any two situations when government of India debarred the internet services in certain states for a short period of time and give reason.

Module 3

Class : IX, Subject : English CCT ACTIVITY

Q1. See the picture and answer the questions that follow.

GEVORKIAN DANCE ACADEMY PRESENTS

SUMMER CAMP 2019

May 28 – August 20

CHUCK E CHEESE **50** **LA ZOO** **CAR MUSEUM** **SCIENCE** **DISNEYLAND** **SKY ZONE** **SPACE MUSEUM**

9-11am Sports, Games & Activities
Miller Park in Burbank (Providencia & Kenneth)

11-12pm Lunch at the park (Lunch provided by the parents)

12-2pm Academics English & Mathematics (Tuesday & Thursday)

15 Minutes Snack Time Provided by us

2-4pm Pool Pacific Community Pool in Glendale (Monday & Wednesday)
Field Trips on Fridays Theme Parks, Museums, Movies, Etc.

Per day \$50 • Per Week \$200 • No Enrollment Fee
All payments **MUST** be paid in full for every week in advance

For Info & Registration Please Call (818) 425-0447 Miss Sona (818) 378-5684
8am Drop-off 4:30pm Pick-up at **Gevorkian Dance Academy**
711 S. San Fernando Blvd., Burbank, CA 91502

- a) A day at the Summer camp starts with.....
- i) prayer
 - ii) physical activities
 - iii) no fixed activities
 - iv) singing and painting

- b) Reporting time and pick up time are
- i) 9 am and 5pm
 - ii) 9 am and 4.30 pm
 - iii) 8 am and 5 pm
 - iv) 8 am and 4.30 pm
- c) 11 am on Friday, the child would be
- i) at the Pacific Community Pool
 - ii) park
 - iii) taking dance lessons
 - iv) enjoying the field trip
- d) A group of 7 students enrolled themselves for 3 days, how much fees did they pay?
- e) How do such camps benefit a student's health? (give one reason)
- f) What is the compulsory instruction of the camp officials regarding payment?
- g) If the camp organiser wishes to organise a Spell Bee Competition, which days would he keep in mind?

Module 4
CLASS IX
MATHS
CCT

1. JUICY WATERMELONS

Cubic watermelons are watermelons grown into the shape of a cube. This is generally intended for space efficiency in small refrigerators. The practice of growing cube watermelons is popular in Japan. The melons are grown in boxes and assume the shape of the container. Normal watermelons are round in nature.



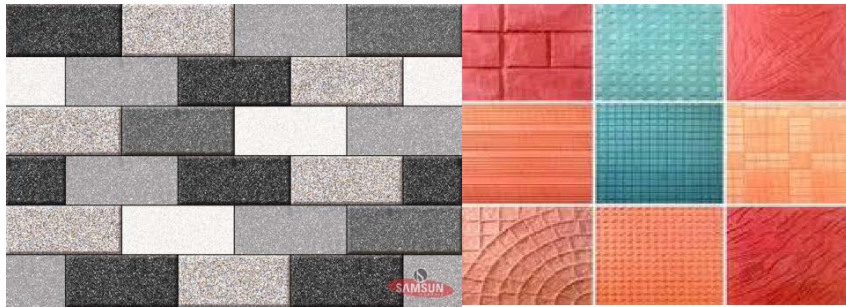
QUESTION 1.1:

If the side of a cubical watermelon is equal to the diameter of a spherical watermelon and they are to be stacked in boxes, then which one would occupy more space than the other?

QUESTION 1.2:

If 90% of the watermelons are full of water, then how much water (juice) will you get from the cubic watermelon of side 15cm.

2. KUTTY'S TILING PROBLEM



Kutty is a floor tile maker. He used to make rectangular or square type of tiles. He prefers to make tiles of regular shapes, so that floorings can be made with these tiles alone without gaps by joining them corner to corner

Question 2.1:

How many rectangular tiles of size 30cmX15cm is required to for rectangular hall of size 3.6mX3m?

Question 2.2:

How many tiles will be joined at one corner question 1, other than sides of the floor

Question 2.3:

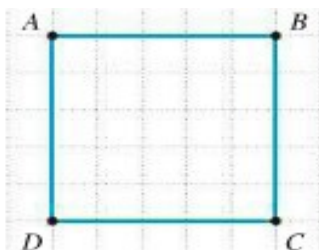
If he uses equi-triangular tiles how many of them join at one corner of tile? Other than sides of the floor

Question 2.4:

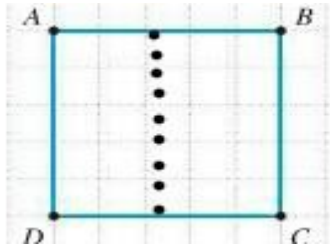
What will be the size largest square tile that can be used for the floorings without cutting any tile for rectangular hall of size 24mX15m?

3. LARGEST EQUILATERAL TRIANGLE FROM A SQUARE

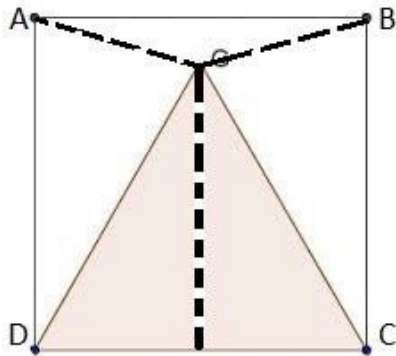
(a) Take a square piece paper name it ABCD.



(b) Fold It in such a way that it's opposite edges lie on each other this folded line is the perpendicular bisector of the sides AB and DC .



- (c) Take a point G on the folded line now fold the two adjacent vertices B and A of the square on the perpendicular bisector, such that the folded line pass through other two vertices C and D of the square.



- (d) Now the triangle at the center is an equilateral triangle as it is formed by taking three sides of the square which are equal.

Questions

- 3.1 What type of triangle is formed? What is the measure of each angle of the triangle?
- 3.2 Find the area of the square whose side is 12cm?
- 3.3 Find the area of equilateral triangle of side 12cm?
- 3.4 What is the ratio area of a square of side a cm to area of equilateral triangle of side a?
- 3.5 If the side square is halved then it's area will increase or decrease?
- 3.6 If the side of square is doubled then it's area will be_____?

4. MAXIMUM AREA

A rectangle is given. By paper folding activity, make an equilateral triangle with one side as breadth of the rectangle. Make another equilateral triangle with maximum area inside it.

Questions

- 4.1 What is the height of maximum area equilateral triangle?
- 4.2 What is the side of that triangle?
- 4.3 Find the area of triangle?
- 4.4 What is the ratio of area of these two triangles?

Module 5

CLASS X MATHS CCT

1. GUESSING THE DAY

ZELLER'S RULE: FIND THE DAY FOR GIVEN DATE QUICKLY

With this technique named after its founder Zeller, you can solve any 'Dates and Calendars' problems. ZELLER'S rule can be used to find the day on any particular date in the calendar in the history. All you have to know is the formula given below and how to use it.

ZELLER'S Rule Formula

$$F = K + [(13 \times M - 1) / 5] + D + [D / 4] + [C / 4] - 2C$$

Where,

1) K = Date. So, for 27/06/2019, we take K = 27
In Zeller's rule, months start from March.

2) M= Month Number

Remember that month start from March in this formula. So

March = 1

April = 2

May = 3

June = 4

July = 5

August= 6

September= 7

October= 8

November= 9

December= 10

January= 11

February= 12

So, for 27/06/2019, M = 4

3) D = last two digits of the year

So, in our example of 27/06/2019, the value of D is 19

4) C = The first two digits of century

So, in our example of 27/06/2019, the value of C is 20.

Let us now calculate the day for 27/06/2019 with the above formula

$$F = K + [(13 \times M - 1) / 5] + D + [D / 4] + [C / 4] - 2C$$

$$F = 27 + [(13 \times 4 - 1) / 5] + 19 + [19 / 4] + [20 / 4] - 2 \times 20$$

Therefore,

$$F = 27 + 10.2 + 19 + 4.75 + 5 - 40$$

[We have to consider only the integral value and ignore the value after decimal. So, the equation changes a bit as shown below. We have just removed value after decimal]

$$F = 27 + 10 + 19 + 4 + 5 - 40$$

$$\text{i.e. } F = 25$$

Now that you have a numerical value for the day, divide the number by 7. We need the remainder only. For example in this case, the remainder is 4.

Now, match the remainder with the chart below:

0 = Sunday

1 = Monday

2 = Tuesday

3 = Wednesday

4 = Thursday

5 = Friday

6 = Saturday

Here, 4 represents Thursday

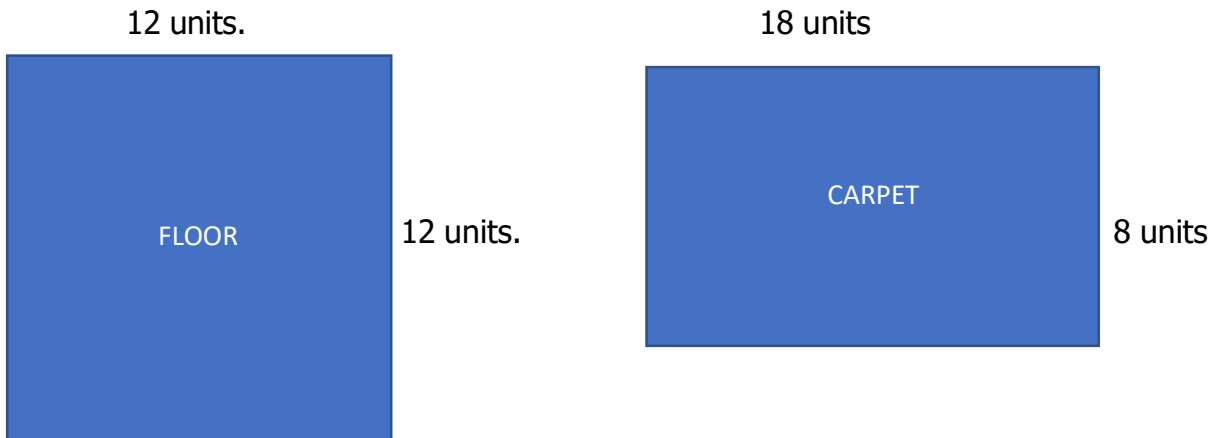
So, by Zeller's rule 27/06/2019 is on a Thursday.

Question1: By using the above Zeller's formula, find the day for 15/08/1947.

Question2: By using the above Zeller's formula, find the day for 26/01/1950.

2. RECTANGLE AND SQUARE

We have a floor and a carpet of the dimensions given below.



We want to cover the whole floor with the carpet.

Try to cover the floor with the carpet.

What do you find? Is it possible? Let us discuss the following.

Questions

- 1) Whose area is greater, floor or carpet?
- 2) How much area of floor can be covered with this carpet?
- 3) Can we cover the floor with carpet? How can we do it and find the minimum number of pieces in which carpet should be cut to cover the floor?
- 4) Find the perimeter of each piece of carpet?
- 5) If we want to join two pieces using a tape of width 1 unit, find the length of the tape required.
- 6) If price of tape is ₹5 per units. Find the money required to buy the tape.

3. SCOUT CAMP

Kendriya vidyalaya New Allahabad cantt is going to organise a scout camp of national level from 30 July 2019. The participants of 25 regions are coming. Every region scout team consists 15 students and two escorts.



Questions

- 1) How many people will be there on 1st August?
- 2) The vidyalaya has a huge playground. For making regionwise tent they given 40×40 square meter area in total.



What will be the maximum size of each tent if every tent shape will be square only?

- 3) How much rope will be required to make fences of each tent?
- 4) What is the area occupied per person?
- 5) During a trekking activity of 6km a student Ram will go to Sangam and return back up to 12 noon. He estimates that he can go to the Sangam at 1.5km/h on average, and return at half that speed. These speeds take into account breaks and rest times. Using Ram's estimated speeds, what is the latest time he can begin his walk so that he can return by 12 noon?
- 6) Ram used step count software on his mobile while trekking to count his steps on his walk to Sangam. He found that he walked 13600 steps on return. Estimate average step length for his return walk. Give your answer in centimetres.

Creative and Critical Thinking- Class 9 Science

Everything in the world around you, in nature, in your city, there are living and non living things. All these things together make up the mass of the Earth. Mass is the quantity of matter determined by its weight. All living and non living things contain matter. Isaac Newton , a famous Physicist discovered some basic principles related to energy , mass, and matter. One law that he put forward was 'law of conservation of matter or mass'

In physics, mass is known to be in a closed system which means that there can be no exchange of matter with the surroundings .No form of matter can be transported or accepted inside the system. The law can be defined as the mass of a substance inside the system will remain constant, no matter what processes are acting inside the system. It is similar to Law of conservation of Energy, which means that total amount of energy in an isolated system remains constant over time.

There are many examples that explain this principle. During burning of coal there are products formed such as soot, ashes, heat and various types of gases. The mass of these products is directly proportional to the amount of coal that was burnt.

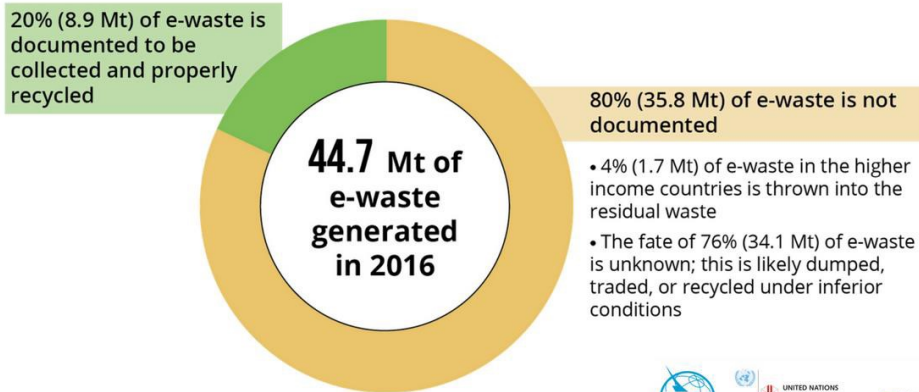
The law of conservation of matter states that matter can change its phase , such as from a solid to a liquid or liquid to a solid, but not the amount of matter or mass nor the energy that is available.

Choose the correct answer:

1. Mass is quantity of matter determined by which of the following:
a) Size b) Weight c) material d) texture
2. Isaac Newton discovered some basic principles related to which of the following?
a) Energy b) mass c) matter d) All
3. What does law of conservation of energy state?
4. State 2 examples where energy changes from one form to another.
5. What does law of conservation of energy verify?

HZ- 2 E-waste

Collection methods of e-waste in 2016



The Global #eWaste Monitor 2017



The advancement in technology and changing lifestyle, status or perception of consumers has driven the demand of electronic items. Consumers' dependency on information and communication technology has been increasing very rapidly. The new innovations in information technology because of the rising demand for higher efficiency and productivity in the businesses and work have become a matter of day to day life. Technologies which were new yesterday have become obsolete for today.

The increase in demand for “White Goods segment” i.e. on consumer durables such as television sets, microwave ovens, calculators, air-conditioners, servers, printers, scanners, cellular phones, computers etc. is for obvious. Thus, there can be broad range of waste electric and electronic goods which have outlived their use, ready for disposal.

These contain chemical materials considered hazardous for human well beings and natural environment. The increasing rate of waste electronic products and additionally the illegal import of junk electronics from abroad create a complex scenario for solid waste management in India.

81

Q1. What According to you is a E Waste ?

1. Waste generated by emails in the trash box
2. Waste collected in the school , home or at community level
3. Waste generated by electronic goods we use and throw
4. Waste caused due to all the electrical gadgets we use at home
5. Waste caused because of both electrical and electronic gadgets

- A) 1 only B) 2 only C) 3, 4 and 5 D) None of the above

Q2: Can you identify some of the e-waste which are generated at school level and at your home level or at both levels and place it in the appropriate column? For one which does not cause any waste put a circle.

HAIR DYER	LCD	CHIMNEY	E-BOOKS	SOAPS
WASHING MACHINES	CFL	WOODEN BENCHES		MOBILE
CALCULATOR	SOLAR PANNEL	TUBELIGHTS		CARS
AIRCOOLERS	STABILIZERS	FRIDGE		ELECTRONIC BELLS
E-MAIL	ELECTRONIC IRON	LAPTOP		SPEAKERS

AT SCHOOL LEVEL	AT HOME LEVEL	BOTH LEVELS

Q3 By looking at the picture shown above can you fill in the table given below

	PERCENTAGE	METRIC/TONS
TOTAL E-WASTE GENERATED GLOBALLY		
E-WASTE PROPERLY RECYCLED		
E-WASTE NOT PROPERLY DOCUMENTED		
E-WASTE WHICH IS DUMBED		

Q4 What according to you are the possible reasons of the increased usage of white goods segment, which has contributed to e-waste globally?

Q5. Let's imagine that the total waste generated in 2020 at global level increases to 50 metric tonne. If percentage remains same of the documented and undocumented waste then find out the following

Waste generated	In percentage	In metric tonne
1. That can be recycled		
2. That cannot be recycled		

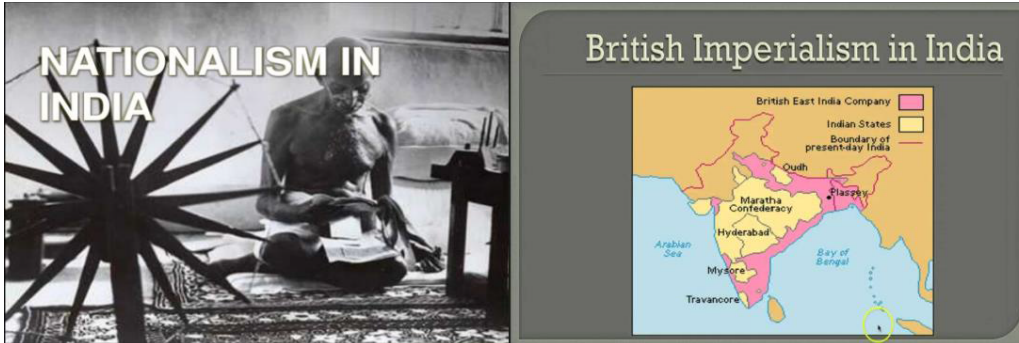
Q6. Give your suggestions which you think is appropriate related to the above given scenario

Statement	Agree	Strongly Agree	Disagree	Don't know
We should change our life style to solve this global issue				
Every single person's Contribution will not affect				
Its a global concern which should be dealt very seriously				
We should stop using technology with immediate affect				
Recycling changes the quality of the substance				

Module 7

CLASS – 10

SOCIAL SCIENCE CCT



Writing at the beginning of the 20th century, Hobson uses the term “imperialism” to refer to a historically determinate event: the transformation of Nationalism, which had dominated the international arena for more than a century, into a general tendency of states to expand beyond their national boundaries. The impact of Nationalism on pre-existent territorial-political entities had in some cases been to increase their cohesion, in others to lead to their disintegration. But its general result was the formation of political units (States) of a relatively well-defined ethnic and cultural composition (Nations). Towards the end of the 19th century, however, these Nation-States had exhibited a tendency to “overflow their natural banks,” thereby giving rise to those expansionist phenomena which Hobson specified by the term “Imperialism.”

Answer the following questions:

1. What were the motives for Imperialism?
2. What were the effects of British Imperialism on India?
3. How does Nationalism contribute to building a powerful nation - state?
4. Discuss how world leaders used Nationalism to pursue their goal of national gain or freedom.
5. How do Cultural Nationalism and Political Nationalism differ?

Module 8

रचनात्मक और गहनात्मक मूल्यांकन

कक्षा-दसवीं

विषय-हिन्दी

प्र०1 निम्नलिखित गद्यांश को ध्यान पूर्वक पढ़ कर दिए गए प्रश्नों के उत्तर लिखिए:-

एक बार रेलवे स्टेशन पर टिकट लेते हुए गलती से मैंने 10रुपए की बजाए 100 रुपए का नोट दे दिया और मैं जल्दी-जल्दी गाड़ी में आकर बैठ गया। थोड़ी देर में टिकट बाबू सेकंड क्लास के डिब्बे में हर आदमी का चेहरा पहचानता हुआ उपस्थित हुआ उसने मुझे पहचान लिया और बड़ी विनम्रता के साथ मेरे हाथ में 90 रुपए रख दिए और बोला, "बहुत बड़ी गलती हो गई थी। आपने भी नहीं देखा, मैंने भी नहीं देखा।" उसके चेहरे पर विचित्र संतोष की गरिमा थी। मैं चकित रह गया।

कैसे कहूँ कि दुनिया से सच्चाई और ईमानदारी लुप्त हो गई है, वैसी अनेक वांछित घटनाएँ भी हुई हैं, परंतु यह एक घटना ठगी और वंचना की अनेक घटनाओं से अधिक शक्तिशाली है। एक बार मैं बस में यात्रा कर रहा था। मेरे साथ मेरे मेरी पत्नी और 3 बच्चे भी थे। बस में कुछ खराबी थी। गंतव्य से पहले ही एक निर्जन सुनसान स्थान में बस ने जवाब दे दिया। रात के कोई 10:00 बजे होंगे। बस में यात्री घबरा गए। कंडक्टर उतर गया और एक साइकिल लेकर चलता बना। लोगों को संदेह हो गया कि हमें धोखा दिया जा रहा है।

बस में बैठे लोगों ने तरह-तरह की बातें शुरू कर दी। किसी ने कहा, "यहाँ डकैती होती है, दो दिन पहले इसी तरह एक बस को लूटा गया था।" कुछ नौजवानों ने ड्राइवर को पकड़कर मारने-पीटने का हिसाब बनाया। वह बड़े कातर ढंग से मेरी ओर देखने लगा और बोला, "हम लोग बस का कोई उपाय कर रहे हैं, बचाइए, यह लोग मारेंगे।" उसकी कातर मुद्रा देखकर मैंने यात्रियों को समझाया कि मारना ठीक नहीं है। परंतु यात्री इतने घबरा गए थे कि मेरी बात सुनने को तैयार नहीं हुए। कहने लगे, "इसकी बातों में मत आइए, धोखा दे रहा है। कंडक्टर को पहले ही डाकुओं के यहाँ भेज दिया है।"

- क) लेखक को कब महसूस हुआ कि दुनिया से सच्चाई और ईमानदारी लुप्त नहीं हुई है?
ख) बस के खराब होते ही लोगों ने क्या-क्या बातें शुरू कर दी?

- ग) जब भी हमारे जीवन में कोई बुरी घटना होती है तब सब से पहले हमारे मन में नकारात्मक विचार आते हैं। इन नकारात्मक विचारों पर विजय कैसे प्राप्त की जा सकती है?
- घ) क्या आप इस बात से सहमत हैं कि दुनिया से सच्चाई और ईमानदारी लुप्त हो गई है? तर्क सहित उत्तर दीजिए।
- ङ) एक बस 8 किलोमीटर का सफर 10 मिनट में पूरा करती है, तो 5 बसें उसी सफर को कितने समय में तय करेंगी।
- च) लेखक अपनी पत्नी और 3 बच्चों के साथ बस में यात्रा कर रहा था। बच्चों की उम्र 12 वर्ष से कम है, उनकी टिकट आधी लगेगी। यदि एक व्यक्ति की टिकट का मूल्य 40 रुपए है तो लेखक ने कितनी टिकट ली और टिकट के लिए कितने रुपए खर्च किए?

